



HOW TO
INSTALL FOLD DOWN SEAT
FOR HANDI-LIFT EA6

Table of contents

1	Introduction	3
2	Preparation	Fejl! Bogmærke er ikke defineret.
2.2	Parts:	4
2.3	Tools:	Fejl! Bogmærke er ikke defineret.
3	Step by step	6
3.1	Install the bracket:	Fejl! Bogmærke er ikke defineret.
3.2	Make holes in the front cover:	7
3.3	Install the fold down seat:	7

1 Introduction

If you for some reason have to install a fold down seat on an EA6, the description below will explain how to install it.

2 Preparation

Before installing the fold down seat please read these instructions

The fold down seat shall be mounted on the right hand side on the lift.

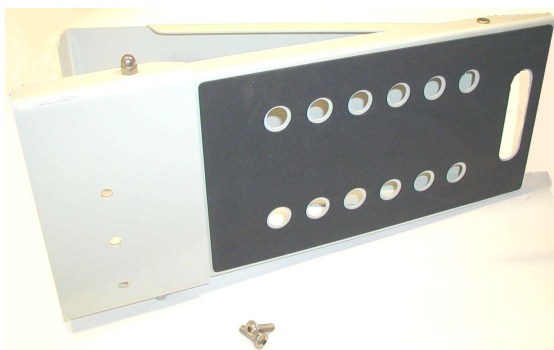
Check that you have all the right parts, and tools to install the fold down seat.

NOTE! The Lift frame does not have pre drilled holes for the mounting bracket order number # 6-2000-41 (*See drawing for drilling the holes on the next page*).

2.1 Parts:

Indsæt billede af montagebeslag og
2 stk skruer.

Mounting bracket
6-2000-41
incl. 2 ø4x25 screws



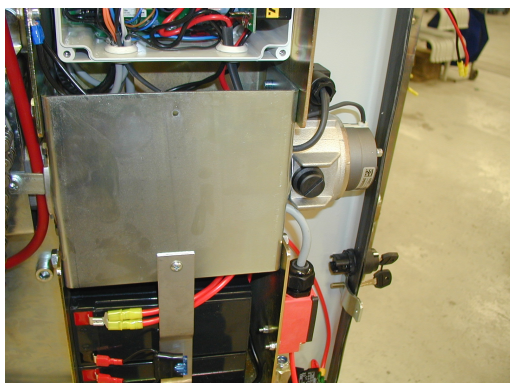
Complete fold down seat
0-2000-00

2.2 Tools:

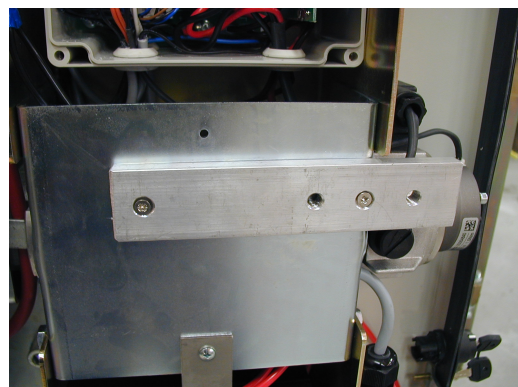
- 3.8 mm drill
- 4 mm allen key
- PH3 crosshead
- 6.8 mm drill
- 6 mm allen key
- Rubber hammer
- 12 mm drill
- M8 tap
- Drill

3 Step by step

3.1 Install the bracket:



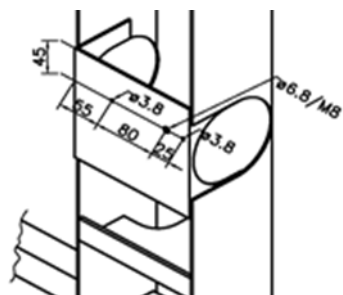
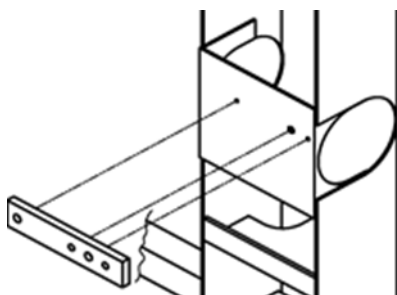
Before



After

- 1) Open the lift and remove the front cover from the lift.
- 2) Drill 2 $\varnothing 3,8$ holes and one $\varnothing 6,8$ hole (see drawing 5 for measurements).
- 3) Make the M8 thread.
- 4) Mount the bracket on the lift frame with the 2 pieces of 4x25 screws.

5)



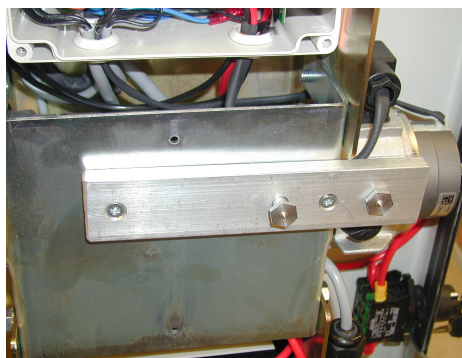
3.2 Make holes in the front cover:

6)



2 X M8 bolts
specially made
for this job.
(Not incl.)

7)

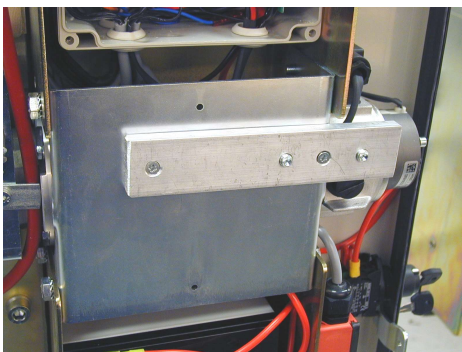


8)



2 X M8 standard
bolts can be used
for this job.
(Not incl.)

9)



- 10) To mark the 2 holes for mounting the fold down seat in the front cover, we suggest that you screw 2 M8 bolts in the bracket and place the front cover on the lift.
- 11) To make the marks in the front cover you tap on the front cover with a rubber hammer or your palm (be careful not to damage the cover when making the marks).
- 12) Remove the front cover again and drill 2 $\varnothing 12$ holes, where the marks appeared on the front cover

3.3 Install the fold down seat:

- 13) Install the front cover and the fold down seat.
- 14) Please check that there is a warning sign on the fold down seat, if not contact CAMA Lift in Denmark.
- 15) If it is possible please instruct the owner/ user how to operate the fold down seat.
- 16) We reserve the right to make alterations on the lift.