



HOW TO
Install fold down seat on
Handi-lift 7

Table of contents

| | | |
|-----|-------------------------------|---|
| 1 | Introduction | 3 |
| 2 | Preparation. | 3 |
| 2.1 | Parts | 4 |
| 2.2 | Tools | 4 |
| 3 | Step by step | 5 |
| 3.1 | Install the bracket | 5 |
| 3.2 | Make holes in the front cover | 6 |
| 3.3 | Install the fold down seat | 7 |

1 Introduction

If you for some reason must install a fold down seat on the unit after installation, the description below is explaining how you must carry this operation out.

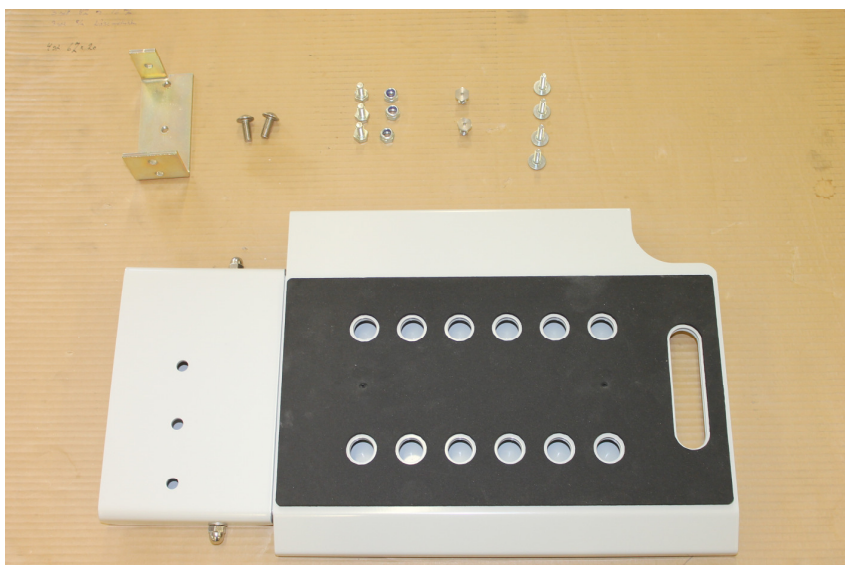
2 Preparation.

Before you install the fold down seat please read these instructions carefully. Check that you have all the necessary parts and tools to install the seat.

NOTE! The lift cover does not have pre-drilled holes for mounting the fold down seat (see pictures for drilling the holes on the following pages.)

The fold down seat can only be installed on the right side of the lift unit.

2.1 Parts



| | | |
|--------------------------------------|---|------------------------|
| Fold down seat | Mounting bracket | 3 M8x16 bolts and nuts |
| 4 x M6x20 cover screw (not incl.) | 2 x M8 bolts (not incl.) Part no 0-0000-04 | |

2.2 Tools

| | | |
|------------------|----------------|----------------|
| Drilling machine | 5 mm allen key | 4 mm allen key |
| 13 mm spanner | Rubber hammer | Ø12 drill |



3 Step by step

3.1 Install the bracket

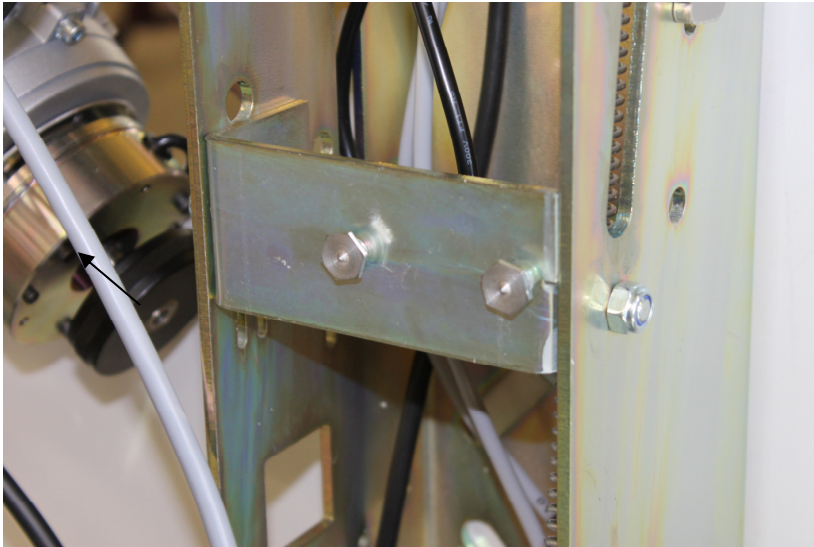
Open the lift and remove the front cover from the lift.

Mount the bracket on the lift frame with the 3 M8x16 bolts and nuts.



3.2 Make holes in the front cover

Now you need to mark the 2 holes in the front cover. We suggest that you screw 2 M8 bolts (e.g. part no 0-0000-04) in the bracket and place the front cover on the lift.



To make the marks in the front cover you tap on the front cover with a rubber hammer or your palm (be careful not to damage the cover when making the marks).



Front cover

Tap the front cover gently

Remove the front cover again and drill 2 Ø12 holes, where the marks appeared on the front cover.

3.3 Install the fold down seat

Install the front cover and the fold down seat. Please make sure that a warning sign is on the fold down seat, if not contact CAMA Lift in Denmark.

If it is possible instruct the owner/user how to operate the fold down seat.

We reserve the right to make alterations on the lift.