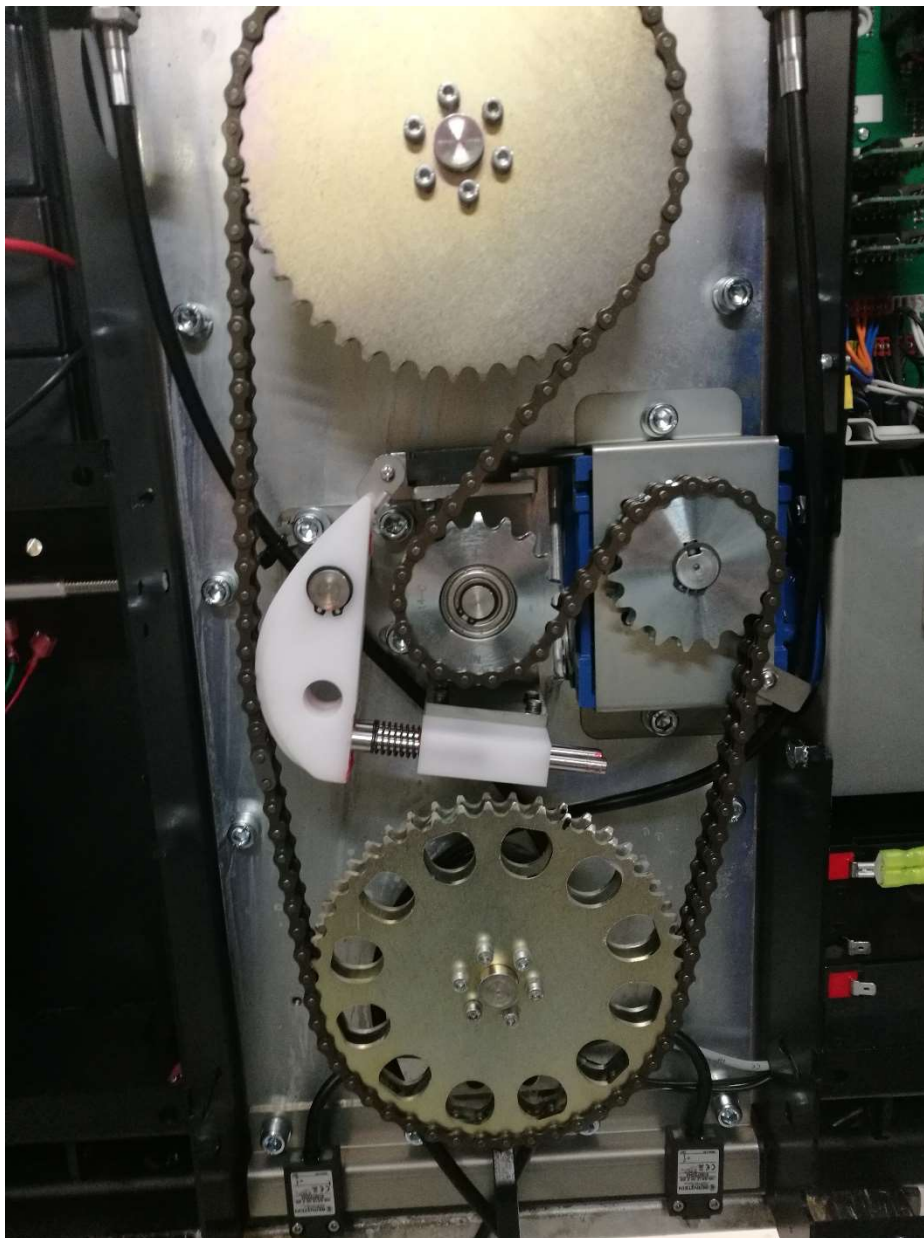




HOW TO
Change the chain on EA6

If there is a straight rail on the unit please place the lift unit here before starting the procedure.

Remove the existing chain and install as shown on below photos and tighten the center gear by using a screwdriver between chain and chain tensioner.



Placement of the chain



Remember the cable tie to hold the cable



Make sure the tensioner is positioned as shown on the photos.