



**HOW TO**  
**Change the side on EA7**  
**changeable**

## Table of contents

1	Introduction	3
2	Preparation.	3
	2.2 Tools	4
3	Step by step	4
	3.1 Setting the degrees	4
	3.2 Various alterations	7

## 1 Introduction

If you need to change the side on the EA7, the description below is explaining how you must do this operation.

## 2 Preparation.

Before you start the process, please read these instructions carefully. Check that you have all the necessary tools to do the operation.

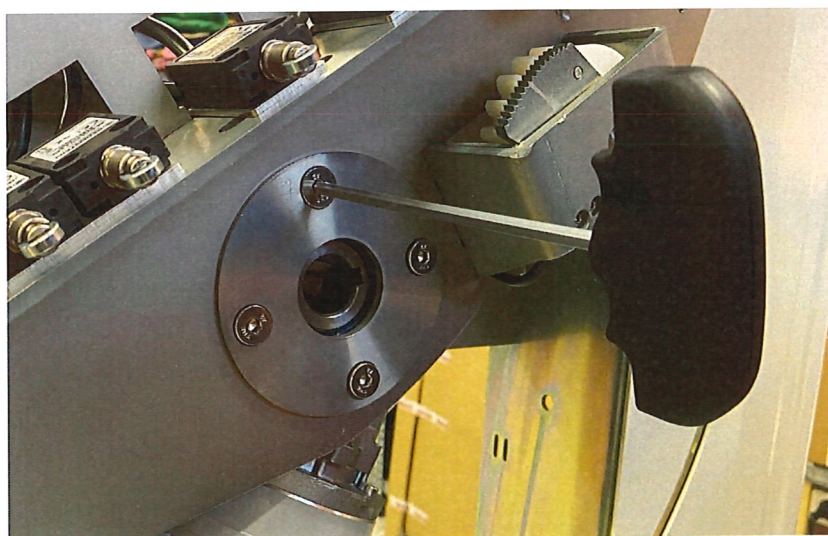
## 2.2 Tools

Drilling machine	M5 allen key	13 mm spanner
M5 tap (From Cama)	M8 x 1 tap (From Cama)	4,2 mm drill (From Cama)

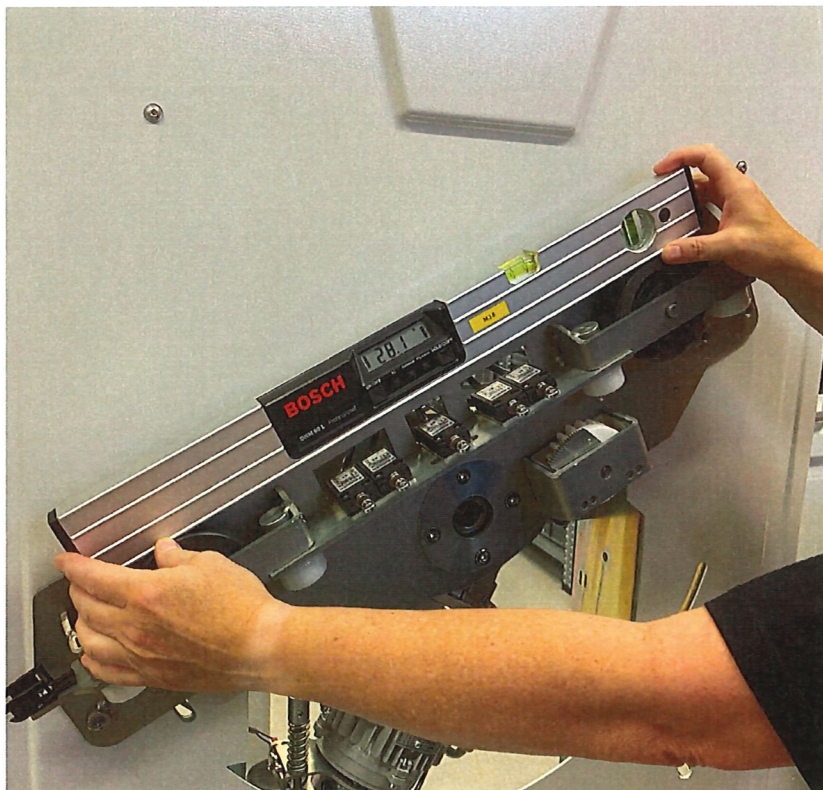


## 3 Step by step

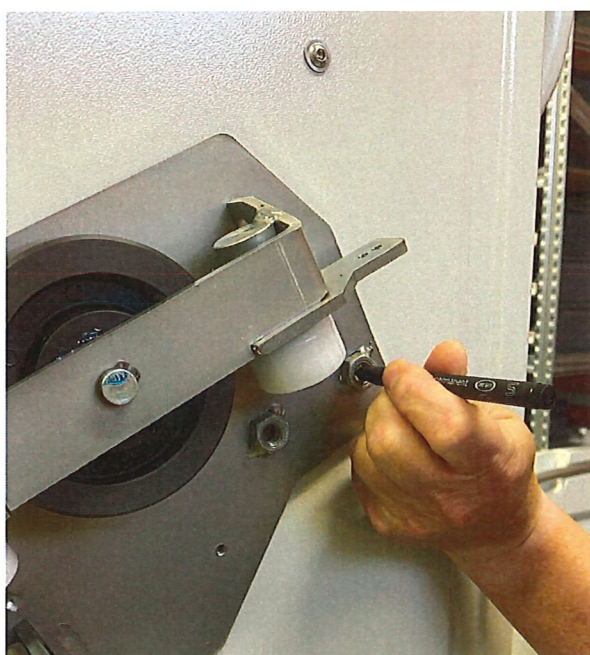
### 3.1 Setting the degrees



Loosen the screws before setting the degrees on the motor carriage

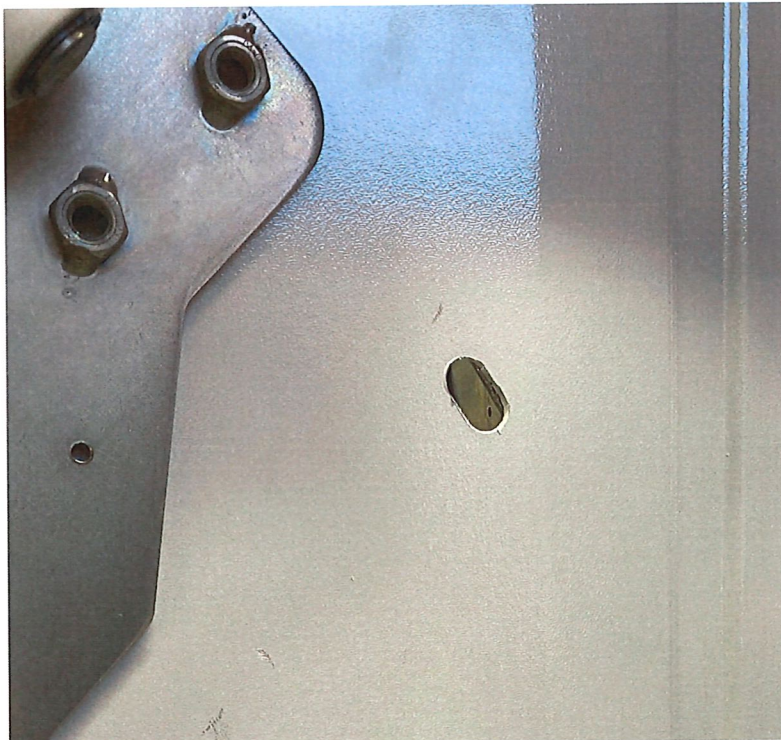


Set the motor carriage in the correct degrees

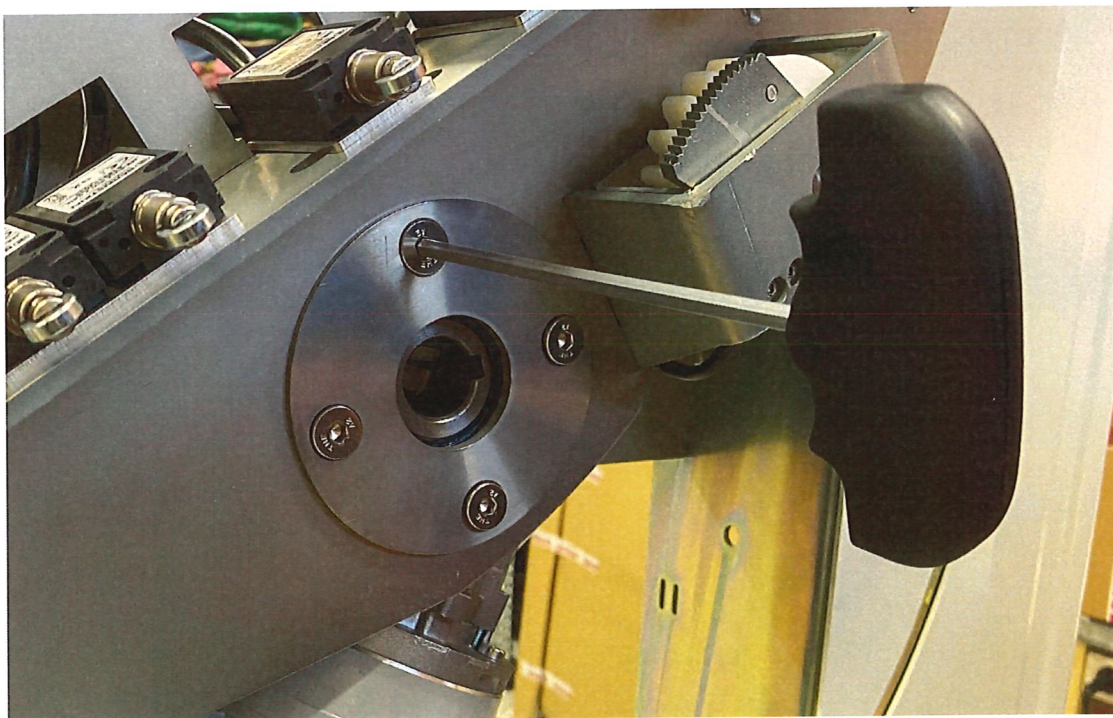


Mark up the holes for fastening the motor carriage





Make a 10,5 mm oblong hole for M10x20 bolts

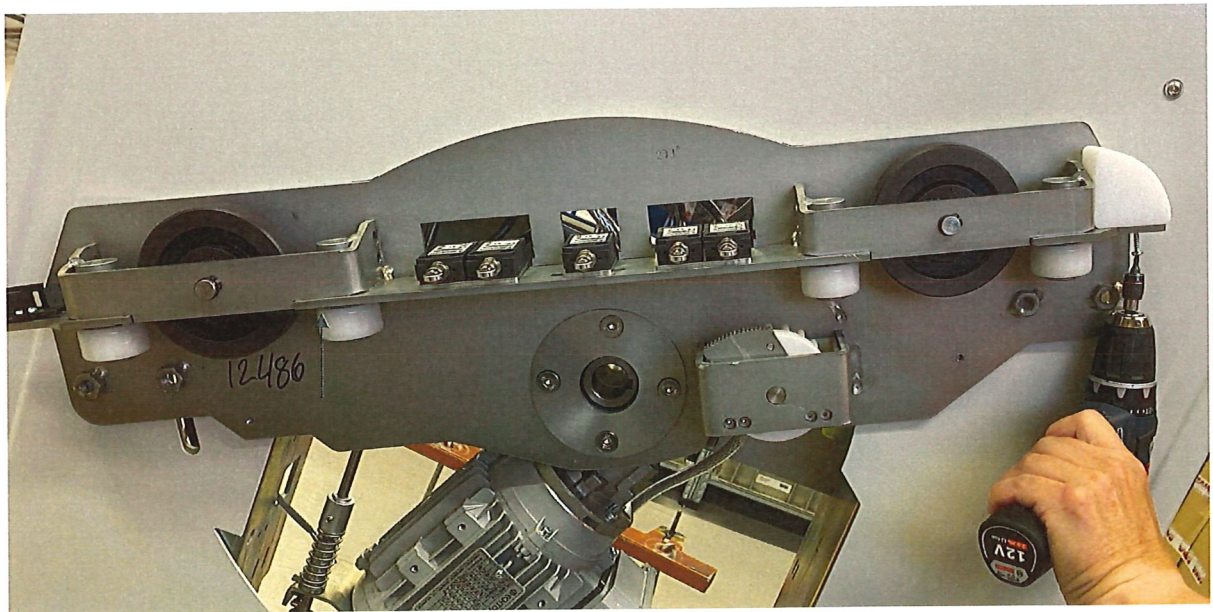


Tighten the screws after setting the degrees on the motor carriage

### 3.2 Various alterations



Unscrew the bracket for the energy chain and move it to the lower end of the motor carriage.

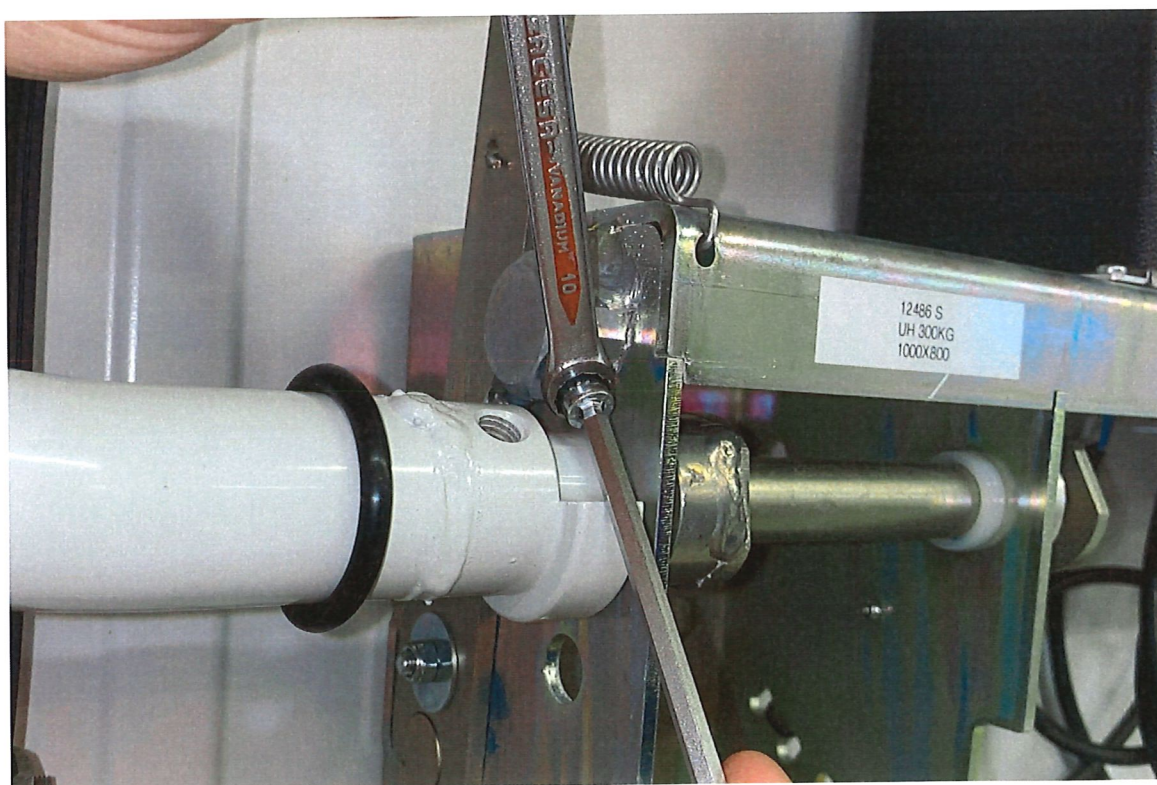


Move the nylon block to the upper end of the motor carriage.





Mark up the 12,5 mm hole for the support wheel carriage and set it in the right angle.

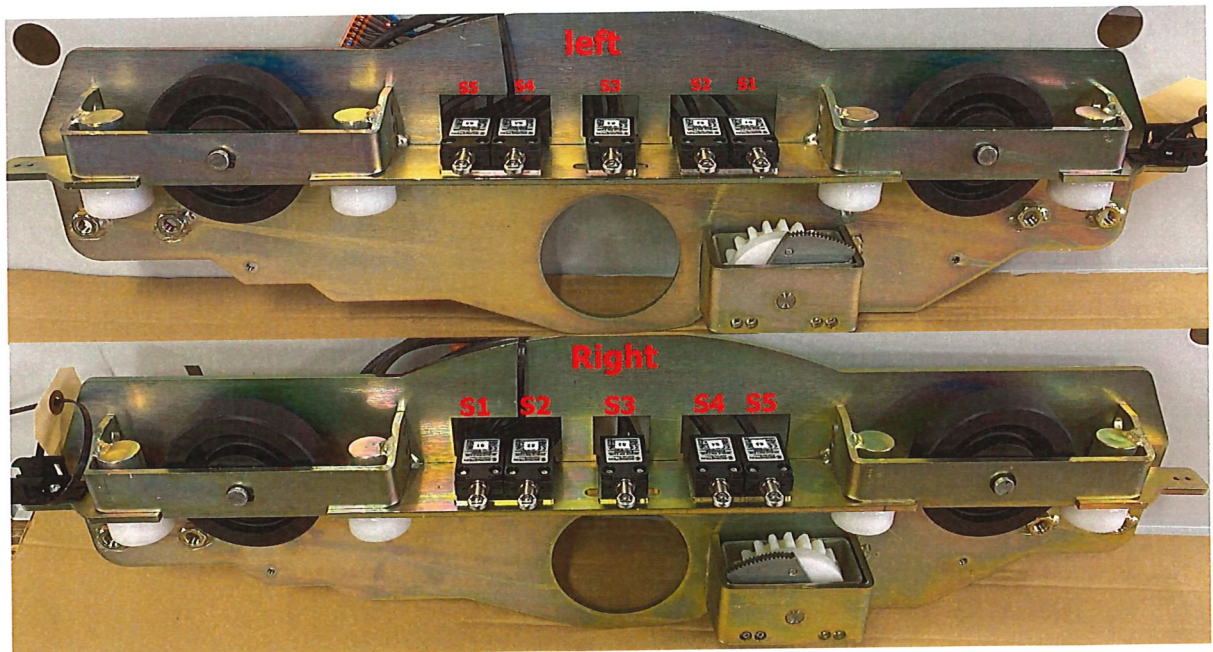


Adjust the barrier arm both vertically and horizontally.





Adjust the barrier arm both vertically and horizontally.



Placement of the limit switches on a right hand and a left hand unit, respectively. Make sure they are situated correctly.