

CHANGING SIDES ON A HANDI-LIFT EA7 STEP BY STEP

PARTS NEEDED FOR THIS JOB

Motor carriage part no.: 7-4000-0

MAIN RAIL

PAGE 2

- ☐ FIXING THE RACK ON THE RAIL

Fig 1

Regarding the rail it is important that you follow the guidelines on the enclosed drawing and make sure that the fastening goes through the rail material at the lower end of the rail in order to avoid that the lift falls down.

- ☐ HOLDER FOR ENERGY CHAIN

Fig 2

Turn the energy chain according to the drawing.

MOTOR CARRIAGE

PAGE 3

- ☐ NEW MOTOR CARRIAGE WITHOUT MOTOR

Fig 3

Install the centre holder, if available, on the lift according to the drawing. When you have moved over the motor and various other parts to the new motor carriage (the pinion is put on the other side of the gearbox) you can put it on the centre holder and adjust it into the right angle and then fasten it or install it according to the drawing with angles.

- ☐ SWITCH ELECTRICAL LIMIT SWITCH "**ØE & NE**" NOT "ØSE"

Fig 3

- ☐ TURN THE OVERSPEED GOVERNOR

Fig 4

Turn pos 2 and pos 5 on fig 4. Make sure that it is clean inside before assembly.

BARRIER ARMS

PAGE 5

- ☐ SWITCH "**BE1 & BE2**" ON THE LIFT FRAME

Fig 5

- ☐ SWITCH "**FP & GP**" ON THE CIRCUIT BOARD

Fig 6

PLATFORM

PAGE 6

- ☐ SWITCH THE SENSITIVE FLAP SWITCHES "**KEN & KOE**"

Fig 7

FINISH WORK

- ☐ TURN THE JOYSTICK
- ☐ MOUNT THE MOTOR COVER

Fig. 1

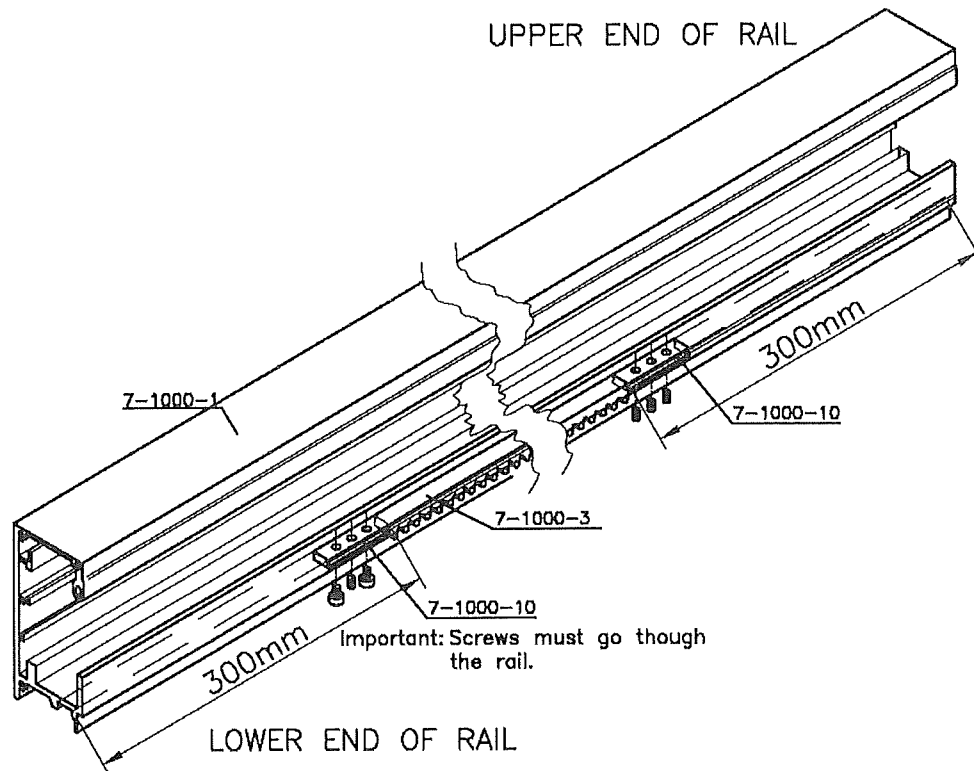


Fig. 2

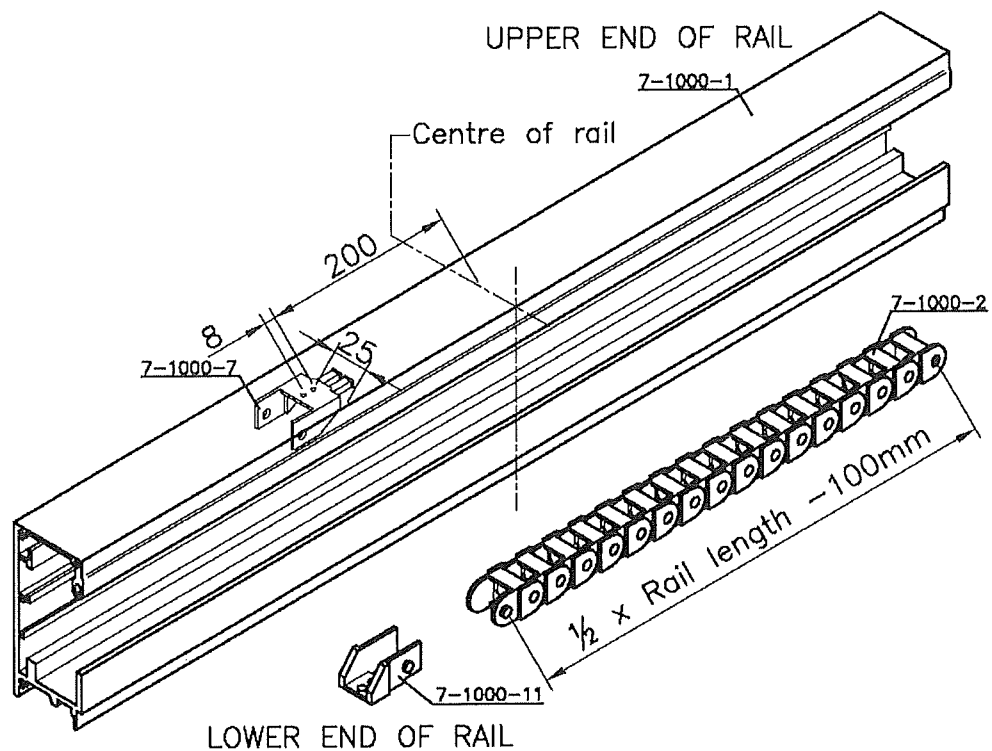


Fig. 3

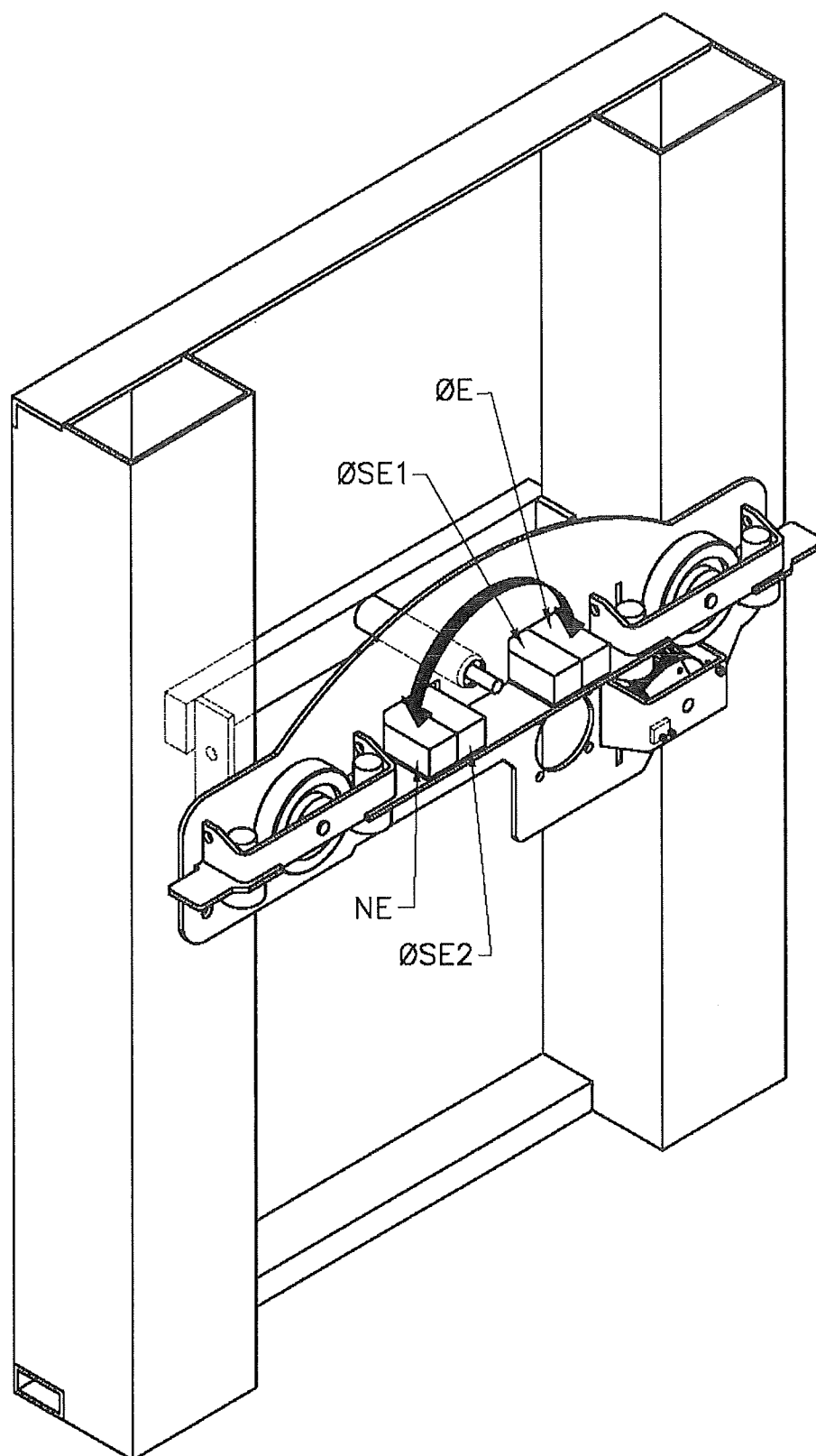


Fig. 4

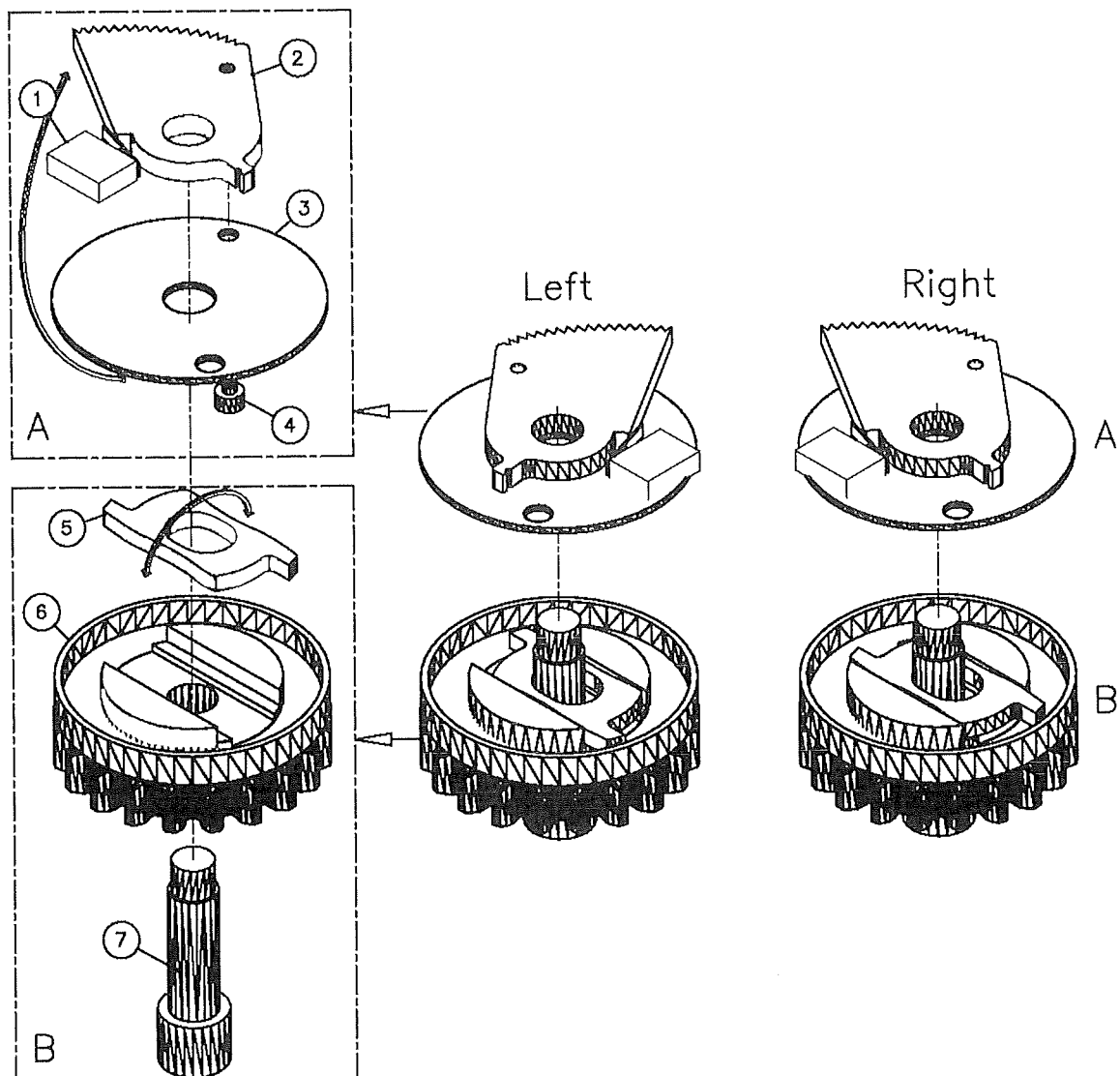


Fig. 5

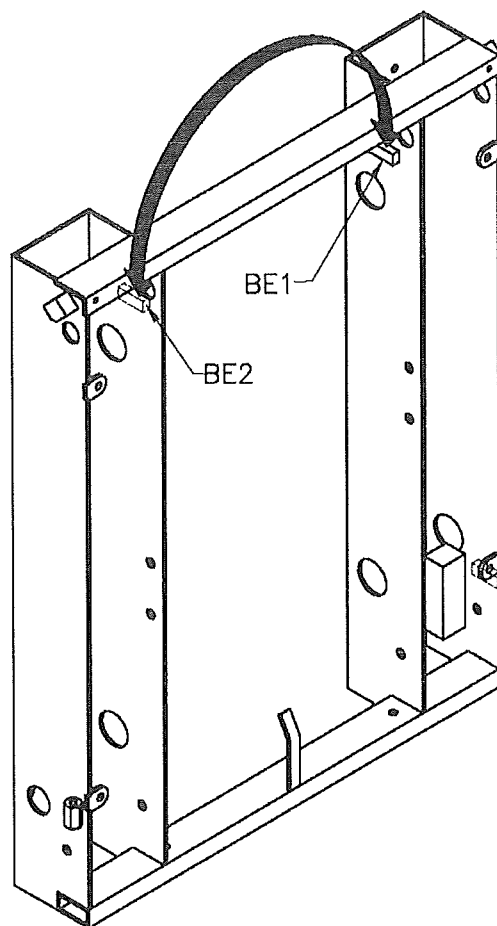


Fig. 6

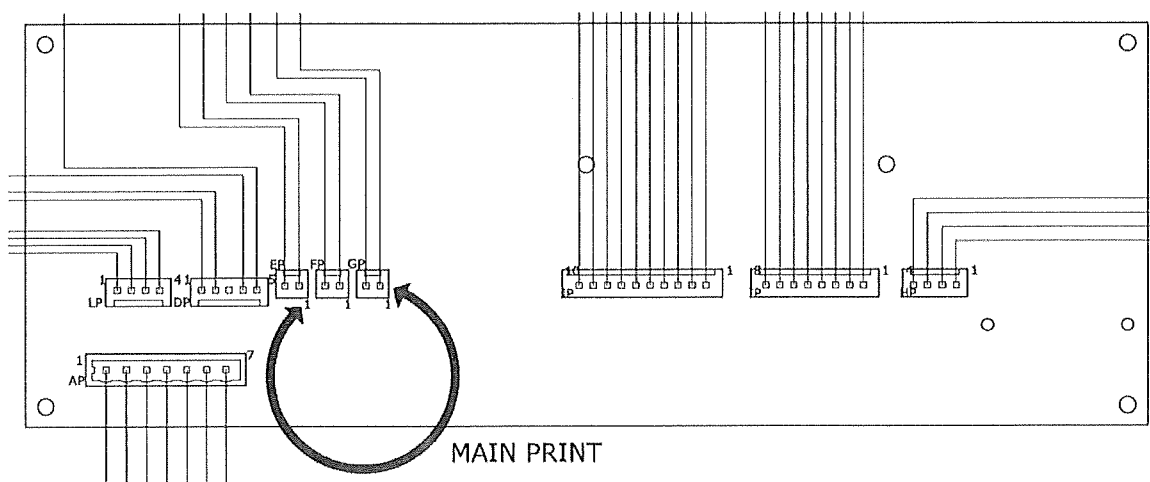


Fig. 7

